



QUICK RENDER RANGE

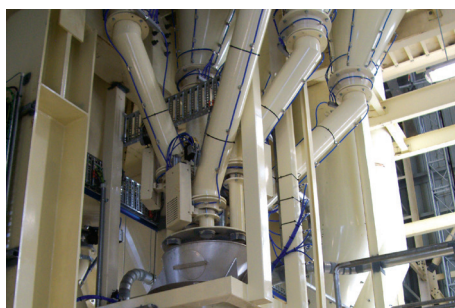
Serving solid plasterers for 40 years.

Why use ROCKCOTE's Quick Render range?



Range

- ✓ Unrivalled product quality and consistency means
 - No surprises on site
 - Ready to over coat in 48 hours
 - Full product warranties.
- ✓ The Quick Render range has a product for every substrate and every project.



Manufacturing

- ✓ State of the art control system to ensure consistent product quality.
- ✓ 100% water self sufficient plant means no town water and no additional cost to you.
- ✓ Capacity of 160,000kg per shift, means our products are always available when you need them.



Experience

- ✓ Designed by solid plasterers for solid plasterers.
- ✓ For over 40 years, ROCKCOTE has been serving solid plasterers, so we know what you need from your renders.

Application

By Hand

Quick and easy to apply off the trowel, which keeps you moving quickly.



By Machine

All Quick Renders are suitable for machine application so you can ramp up your productivity.

The positive alternative to 'site mix' render

(sand & cement)

Quick Render Benefits

- ✓ 48 hours curing time
- ✓ Cost savings
- ✓ Quality and consistency
- ✓ No wastage
- ✓ Range of renders to suit various substrates, see ROCKCOTE website for more details
- ✓ Water Resistant
- ✓ Healthy workplace
- ✓ Manufactured in Australia's premier state of the art render plant



ROCKCOTE Quick Render

Site mix

- ✗ 21—28 day curing time
- ✗ More scaffold hire time
- ✗ Higher risk of contamination
- ✗ Mess on site
- ✗ Soaks up water easily
- ✗ Greater risk of cracking, crazing and deterioration (due to inconsistent mixes)
- ✗ General purpose sand dumped on site from a landscape yard, then mixed on site with other unmeasured ingredients
- ✗ Greater risk of efflorescence



Site Mix

Background on Efflorescence

- › Efflorescence is caused by the migration of salts in water through the wall.
- › ROCKCOTE's render is formulated so salts are not present to cause efflorescence.
- › ROCKCOTE's render is formulated so moisture migration is restricted (i.e. water resistant).
- › Both these actions prevent efflorescence occurring on ROCKCOTE render.



Example of Efflorescence

ROCKCOTE's Dry Mix Render Plant

- › Cutting edge of pre-mixed render technology
- › The first plant of its type in Australia
- › State-of-the-art control system, ensuring consistent product quality
- › Energy efficient
- › Greater raw material control, ensuring identical sand analysis each and every time
- › Capacity - 160 tonnes per shift - 8,000 bags



ROCKCOTE Quick Render range

Product	Purpose	Colour	Sand Profile	Typical Coating Thickness	Set Time*	Cure Time	Pump	Tools
 Grey QRender	Masonry	Grey	Medium	4mm Min 10mm Max	2-3 Hours*	48-72 Hours	Yes	
 Off White QRender	Masonry	Off White	Fine	4mm Min 10mm Max	2 Hours*	48-72 Hours	Yes	
 Fine QRender	Masonry	Grey & Off White	Fine	4mm Min 10mm Max	2-3 Hours*	48-72 Hours	Yes	
 Super Fine QRender	Masonry	Off White	Super Fine	2mm Min 6mm Max	2-3 Hours*	48-72 Hours	Yes	
 Premium Sponge QRender	Masonry Skim Coat	Off White	Fine	2mm Min 10mm Max	2-2.5 Hours*	48-72 Hours	Yes	
 Quick Float QRender	Masonry	Off White	Medium	4mm Min 10mm Max	2 Hours*	48-72 Hours	Yes	
 Fibre Reinforced QRender	AAC, Masonry & Core Filled Fibre Cement	Off White	Fine	2mm Min 10mm Max	2 Hours*	48-72 Hours	Yes	
 PM100 QRender	EPS	Grey	Medium	4mm Min 10mm Max	2-2.5 Hours*	48-72 Hours	Yes	
 PM100 High Build QRender	Masonry, Core Filled Fibre Cement & EPS	Off White	Fine	4mm Min 30mm Max	3-12 Hours* depending on thickness	2-7 Days depending on thickness	Yes	

*Under normal drying conditions. Dry times vary with changes in temperature and humidity and residual moisture in the substrate.

